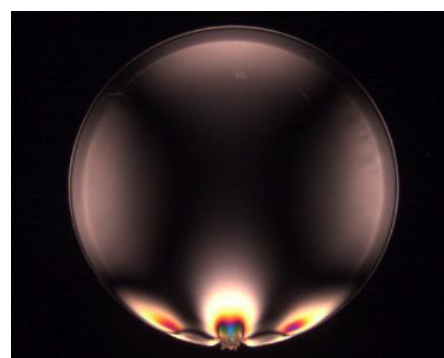
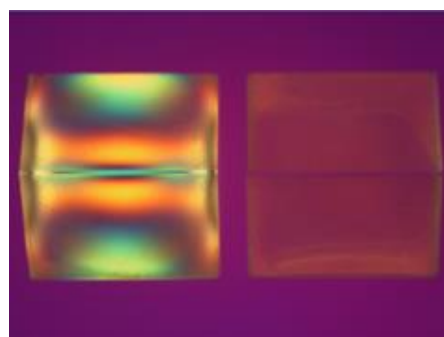


StrainEye

Polariscope LSM-8000LE Series



LSM-8000LE visualize a inside stress or birefringence in a transparent material by using polarization technique. This product is suitable for big sample.

We prepared two models which have each different inspection method for various users.

Application

- Inspecting strain in optical glass
- Inspecting strain in glass tube
- Inspecting strain in mold plastics
- Detecting defective in film
- Detecting defective in crystal

* The picture shows LSM-8400LE

	LSM-8200LE	LSM-8400LE
Size	W 500mm×D 550mm×H 650mm	W 500mm×D 550mm×H 660mm
Weight (Main body)	26kg	
Effective Dimension of Analyzer (AN)	φ200mm	
Effective Dimension of Polarizer (PL)	350×350mm	
Inspection Method	Circularly Polarizing Light Method	Crossed Nicols Method / Sensitive Tint Color Method Senarmont Method
Light Source	LED White 3000K	
Power Consumption	77W	
Power Source	A C 100~240V、50/60Hz	

Luceo co., ltd.



<http://www.luceo.co.jp>