

Striae Inspection Device

LSC-5100

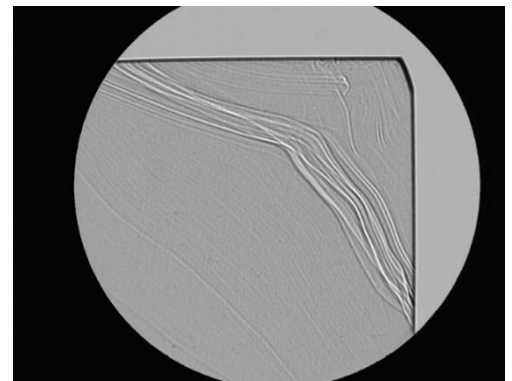
- ✓ Inspection of striae (non-uniformity) in optical element
- ✓ Inspection of foreign matter, air bubbles, scratches, and grinding marks
- ✓ Appropriate for inspection of uneven polishing such as orange peel

Appropriate for quality management of optical component

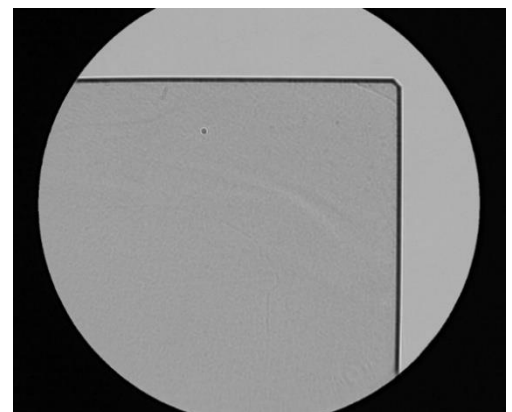
■ Device appearance



■ Example ~ IR cut off colored glass filter



Large striae



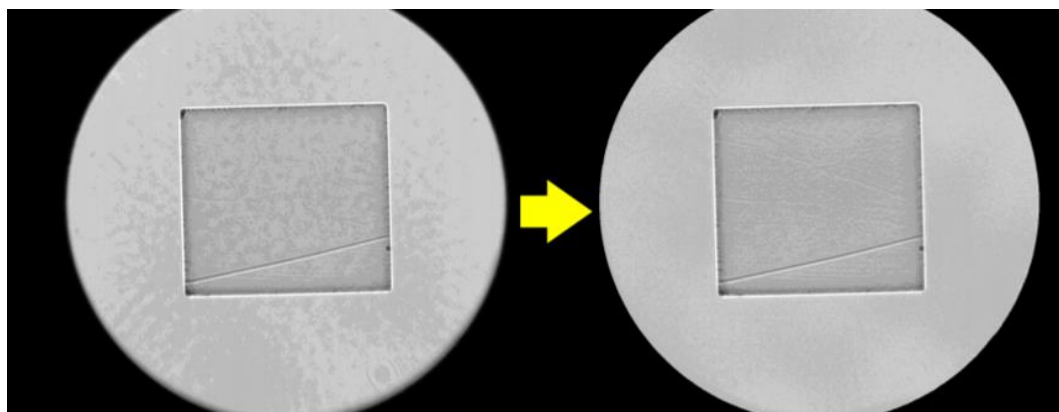
Orange peel

※The stand for vertical placement is an option.

※The stand for PC is not for sale.

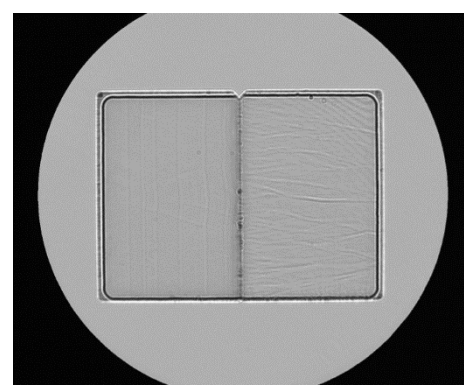
Product Features

- ✓ Determine defects at a quality level of acceptance limit and reduces the time of operation with a base compensation.



Specification

Item	Striae Inspection Device LSC-5100
Inspection Method	Shadowgraph method
Measurement area size	approx. ϕ 45mm
Measurement area space (height)	approx. 100mm
Light source	High Brightness Blue LED
Wavelength for measurement	450~465nm
Effective pixels	1080(H) × 824(V)
Dimming function	Volume dimming
Size (Body)	Horizontal (Standard) W1030 × D160 × H205mm Vertical stand (Optional) W380 × D455 × H1245mm
Weight (Main body)	29kg
Composition	Body / PC / Cable
Accessories	Table for sample / Cover for main body
Option	Vertical stand (Weight: 10kg)
Environment	10~35°C Humidity 20~80% (no condensation)
Power	AC100-240V, 50/60Hz, Consumed power 7W
Monitor resolution (Max)	1920 × 1200 (24 inches)
Supported OS	Windows10 (64bit) Japanese / English



Striae of waveplate

Main Test Object

- Quartz wave plate
 - Optical filter
 - Optical lens
- (Products other than parallel substrate should be observed with immersion liquid)

About Test Object

Only for products that transmit the wavelength of 450–465 nm.
Products with low transmittance or opaque due to diffusion cannot be inspected.

**We offer sample measurement service.
Please feel free to contact us!**

