

■ Polariscopes

Hello everyone. Continuing from the previous blog, we will introduce the new functions of the fully automatic strain tester LSM-9100 series.

■ LSM-9100 series new functions

LSM-9100W / WS is active in Japan and overseas as a polariscopes for resin injection molded products, sheet materials, films, etc. because it can measure large resin retardation in a wide range up to 3000 nm.

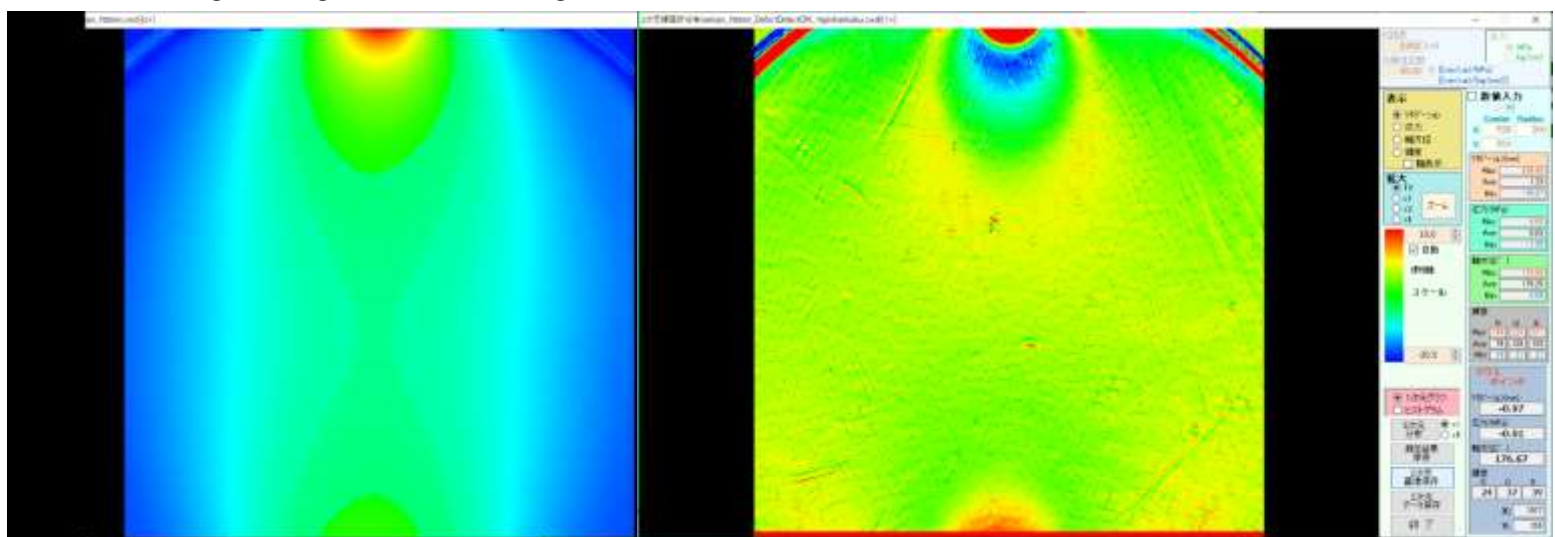
This time, we will introduce the functions of the newly added image processing filter.

■ Defect extraction filter (Defect detection)

This filter is excellent at extracting local defects from large changes in retardation. An example of this process is shown below.

(a) is the result of measuring the resin disk that receives the compressive load in the normal mode.

(b) is the result of measurement in Defect detection mode with the above same resin disk, it can be seen extracting that local changes by inclusions such as spots, line defects and foreign substances which were difficult to detect due to hiding in a large retardation change.



(a) Normal mode

(b) Defect detection

[The bottom 15 pix. is out of the processing range.]

In addition, when a crystal whose optical axis is oriented in the thickness direction of the object is measured, the retardation distribution is curved due to the influence of the angle of view.

Even in that case, it is possible to emphasize local crystal defects by applying this filter, which further improves the analysis ability.

Sample measurements are welcome. Please feel free to contact us at any time.

Fully automatic strain eye LSM-9100 series

<https://www.luceo.jp/technical/full-automatic-polarimeter-lsm-9100-product-family/>

Contact us :

Luceo Co., Ltd. / Sales Dept.
30-9 Ohyama-kanaicho,
Itabasi-ku, Tokyo
TEL : +81-3-3956-4111
<https://www.luceo.jp/contact-us/>

That's all!