

■ Striae Inspection Device

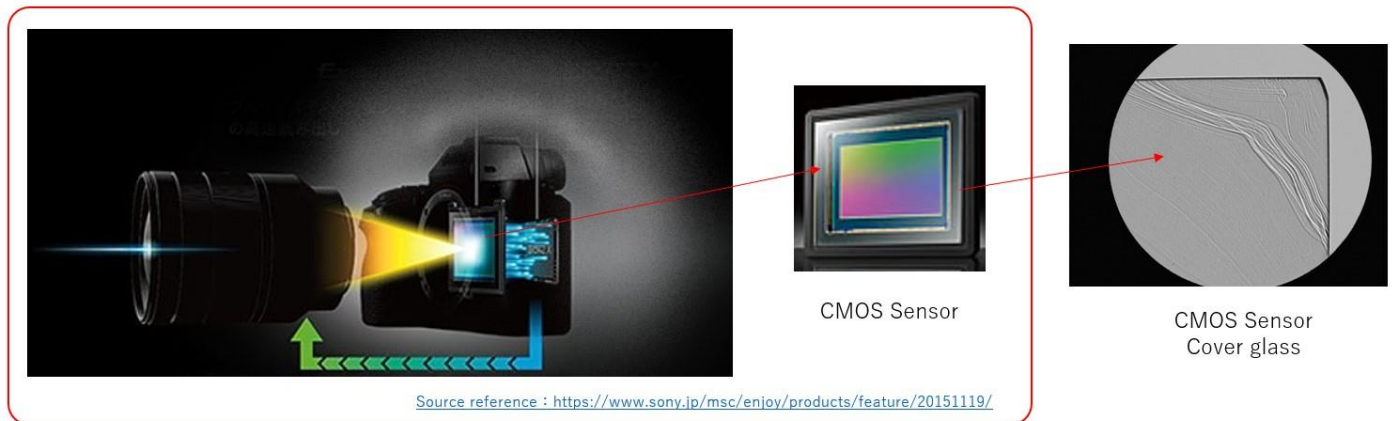
Happy New Year. We look forward to working with you this year as well.

This time, Luceo would like to introduce a new product of Striae Inspection Device(LSC-5100).

■ What is striae?

Striae is one of defect in glass products and a phenomenon of refractive index ununiformity with mixing different composition. We show you an striae evaluation example of a cover glass for CMOS camera module below.

If the cover glass has a vein "Distortion" appears in the captured image



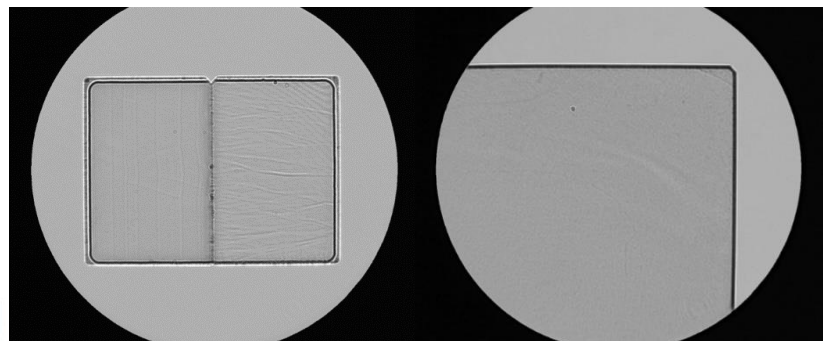
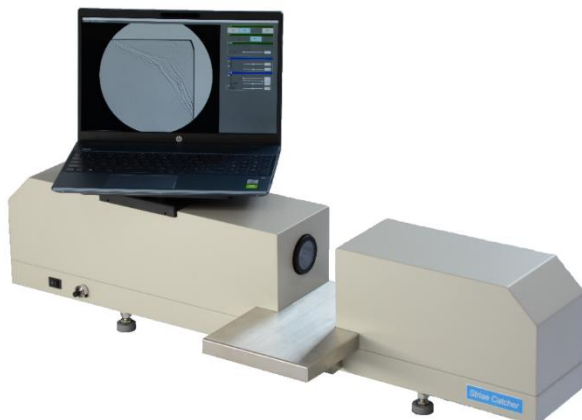
* If there is striae in the coated or bonded state of the optical components, the image captured in the same way will be "distorted", which will affect the image quality.

* There is no problem with optical design software, but if the actual image is distorted, it may be caused by the "striae" of the optical parts.

■ LSC-5100

It is a striae inspection device that uses the shadow graph method as the inspection method. Insert optical components into the depression of the device to transmit light, and you can observe the striae in real time.

In addition, even though it is a striae inspection device, it can detect foreign substances, air bubbles, surface scratches, and other defects such as uneven polishing such as orange peel . Therefore, it is playing an active role as a "device that pleases customers" in the quality control department at the production site.



Luceo accepts sample measurements. If you have a sample you would like to observe with this LSC-5100, please feel free to contact us.

Striae Inspection Device(LSC-5100)

<https://www.luceo.jp/technical/striae-inspection-device-build-to-order-manufacturing-custom-made-product/>

Contact us :

Luceo Co., Ltd. / Sales Dept.
30-9 Ohyama-kanaicho,
Itabasi-ku, Tokyo

TEL : +81-3-3956-4111

[Contact us | Luceo Co., Ltd.](#)

That's all.