

■ Polariscope – About visual performance

This time, you will be able to understand about polariscopes, we will send you about the Leaflet of “Polariscope - About visual performance”.

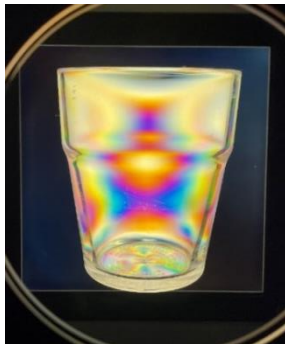
■ Polariscope

Internal stress is applied to glass and plastic products.

The internal stress is losing its balance and called strain. It is invisible to the eye and causes damage. Polariscope can "visualize" their invisible internal stress and you can control product quality.

■ Example of how it looks

Resin Cup



Inspection Method:

Circularly Polarizing Light Method

Resin Smart Phone Cover



Inspection Method:

Circularly Polarizing Light Method

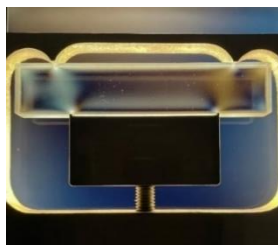
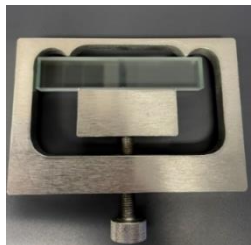
Glasses



Inspection Method:  
Sensitive Color Method

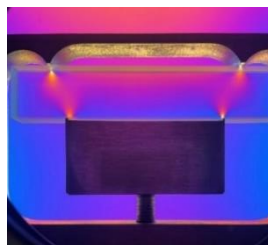
• The Circular Polarizing Method  
It is possible to evaluate highly stress from the beautiful iridescent cycle.  
-Good at evaluating resin products

Glass Rod(Four Point Bending)



Inspection Method:

Circularly Polarizing Light Method



Inspection Method:

Sensitive Color Method

• The Sensitive Color Method  
It is possible to evaluate lower stressed from the vivid contrast of red and blue.  
-Good at evaluating glass

■ Evaluation cases / applications

The leaflet "Polariscope - About visual performance" contains evaluation cases and applications in ways easy to understand. We would appreciate it if you could take a look and use it as a reference when using a polariscope.

Polariscope - About visual performance

[https://www.luceo.jp/wp-content/uploads/2022/04/Polariscope\\_leaflet\\_202202\\_E.pdf](https://www.luceo.jp/wp-content/uploads/2022/04/Polariscope_leaflet_202202_E.pdf)

Products - Polarimeter/Polariscope (STRAINEYE)

<https://www.luceo.jp/polariscopestraineye/>

**Contact Us :**

Luceo Co., Ltd. / Sales Department  
30-9 Oyamakanaicho, Itabashi-ku, Tokyo

TEL : +81-3-3956-4111

[Contact us | Luceo Co., Ltd.](#)

That's all.