

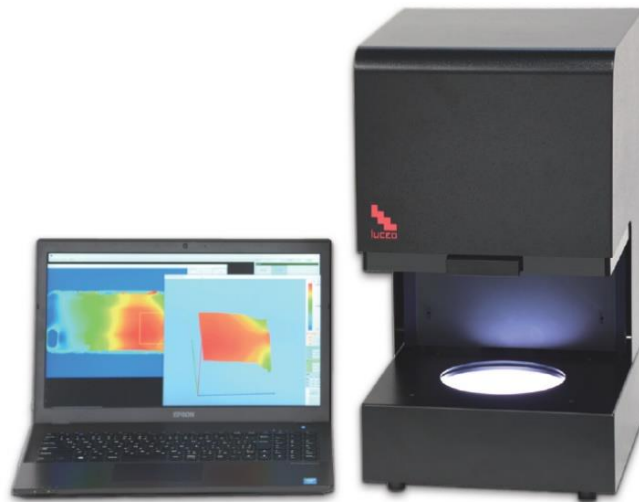
Near Infrared Polariscope

Fullauto StrainEye
LSM-9100WNIR

- ✓ Evaluation of strain distribution in colored resin products
- ✓ Evaluates 2D distribution map up to $\phi 100$ in a few minutes
- ✓ Evaluation of uneven stretching of resin film

Enables quality control of colored resins

- It is possible to evaluate strain distribution of colored resin products which were difficult to evaluate previously.



■ Measurement target

- transparent / colored resin product
- resin film / sheet
- crystal / quartz / optical crystal

You can evaluate resin product like these colors!

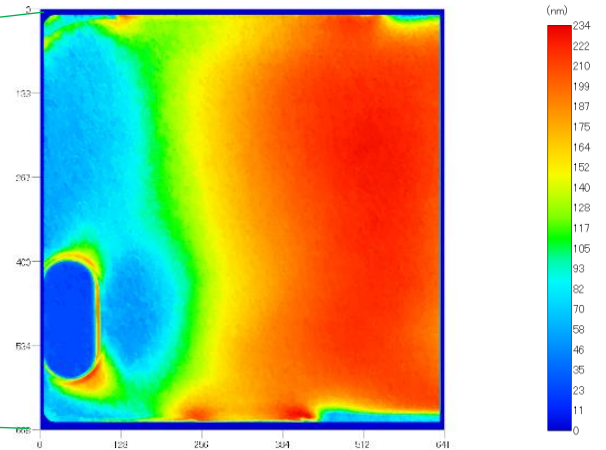


The sample is limited to a object which are transmissive 900 -1200nm wavelength of light. Please inquire for details.

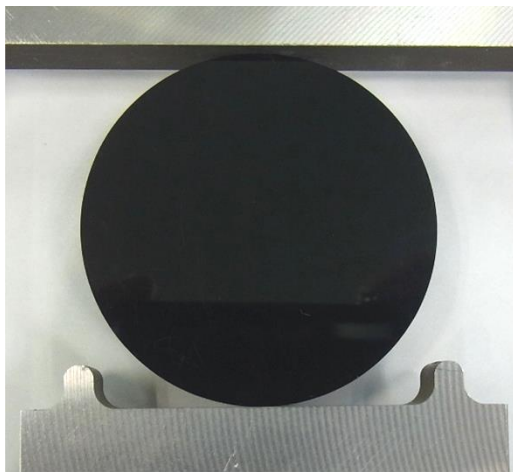
■ Evaluation Examples Colored resin molded products



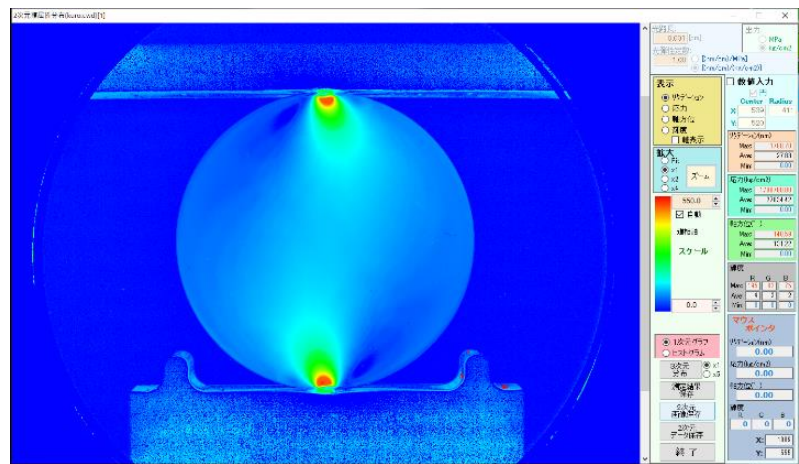
Colored smart phone cover



Stress distributions



Black resin disc under compressive load



Stress distributions

■ Specifications

Model name	Near Infrared Polariscope LSM-9100WNIR
Display items	retardation (nm), stress (MPa)
Measurement range	100~5,000nm
Measurement area size	φ 100mm
Wavelength of light source	900~1,200nm
Inspection method	NIR 3wavelengths Linear Polarization Method
Size / Weight (body)	W300 × D353 × H540mm / 22kg

We offer sample measurement service. There are a variety of polariscopes besides the products in this leaflet. Please feel free to contact us via **“CONTACT US”**.

